



Scotia-Glenville Central School District

Transportation Rezoning Study Presentation

04/13/2026








AGENDA

- 🏡 **Executive Summary**
- 🏡 **Current District Elementary School Zones**
- 🏡 **2026-27 Main Elementary Zones**
- 🏡 **Option 1 Current & Future Flex Zones**
- 🏡 **2026-27 Estimated Enrollment by Grade for Main Elementary Zones**
- 🏡 **Operational Flexibility to Address Isolated Capacity Variances**
- 🏡 **Option 2 Supplemental & Future Flex Zones**
- 🏡 **Conclusion and Next Steps**


Executive Summary

SGCSD and TransPar have partnered on several student transportation advisory initiatives over the past five years. In March 2026, TransPar was re-engaged to support the District in conducting a comprehensive school rezoning study following the District's difficult decision to close Glen-Worden Elementary. Through a series of discussions with District leadership, TransPar and the District collaboratively defined the project scope and analytical methodology described below:

Establish Constraints and Non-Negotiables through a Primary Goal

-  Primary Goal: Maintain existing student bus assignments for students currently being transported to Glen-Worden Elementary who will transition to one of the District's remaining elementary schools
-  Secondary Goal: Balance class sizes across each grade level
-  Key Constraints & Non-Negotiables:
 -  Adherence to specified enrollment targets, including total KG students and class sections at per school
 -  Siblings must remain assigned to the same school
 -  Preservation of existing communities in new school assignments to the greatest extent possible
 -  Continued enrollment of special program students in those programs

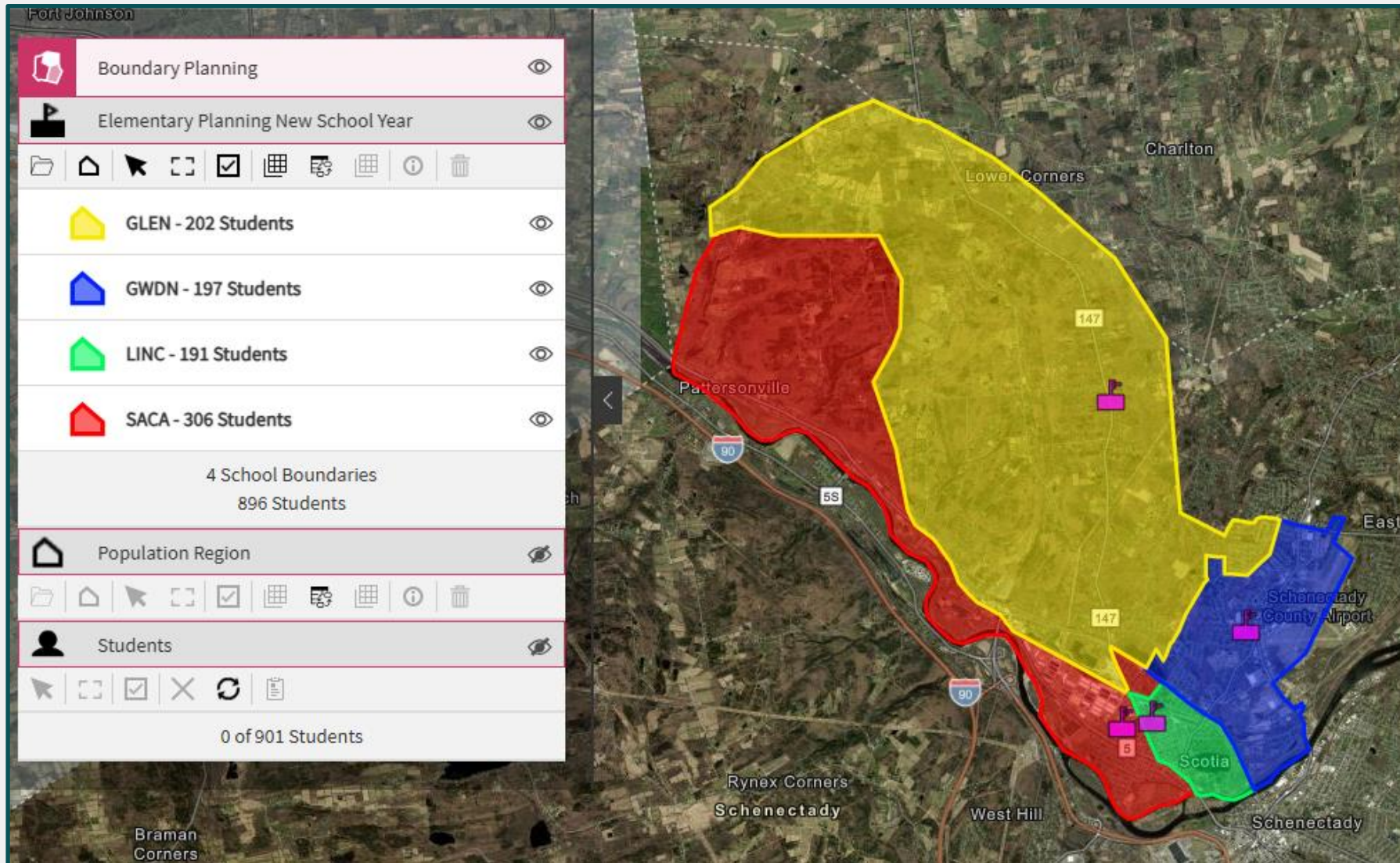
Student Data and Transportation Analysis to Develop School Zones

-  District-provided student enrollment lists were integrated into the District's transportation planning software; this data informed the development of new school attendance zones that aligned with the District's stated goal of preserving existing student bus assignments and the resulting zone configuration serves as the primary rezoning map for the 2026–27 school year

Development of a Flexible (“Swing”) Zone For Incoming KG and New-to-District Students

-  To support future enrollment flexibility, TransPar developed an alternative “swing zone” map for incoming kindergarten students and students new to the District. This map identifies geographic areas in which students may be assigned to one of two designated elementary schools, allowing the District to balance enrollment while maintaining efficient transportation operations

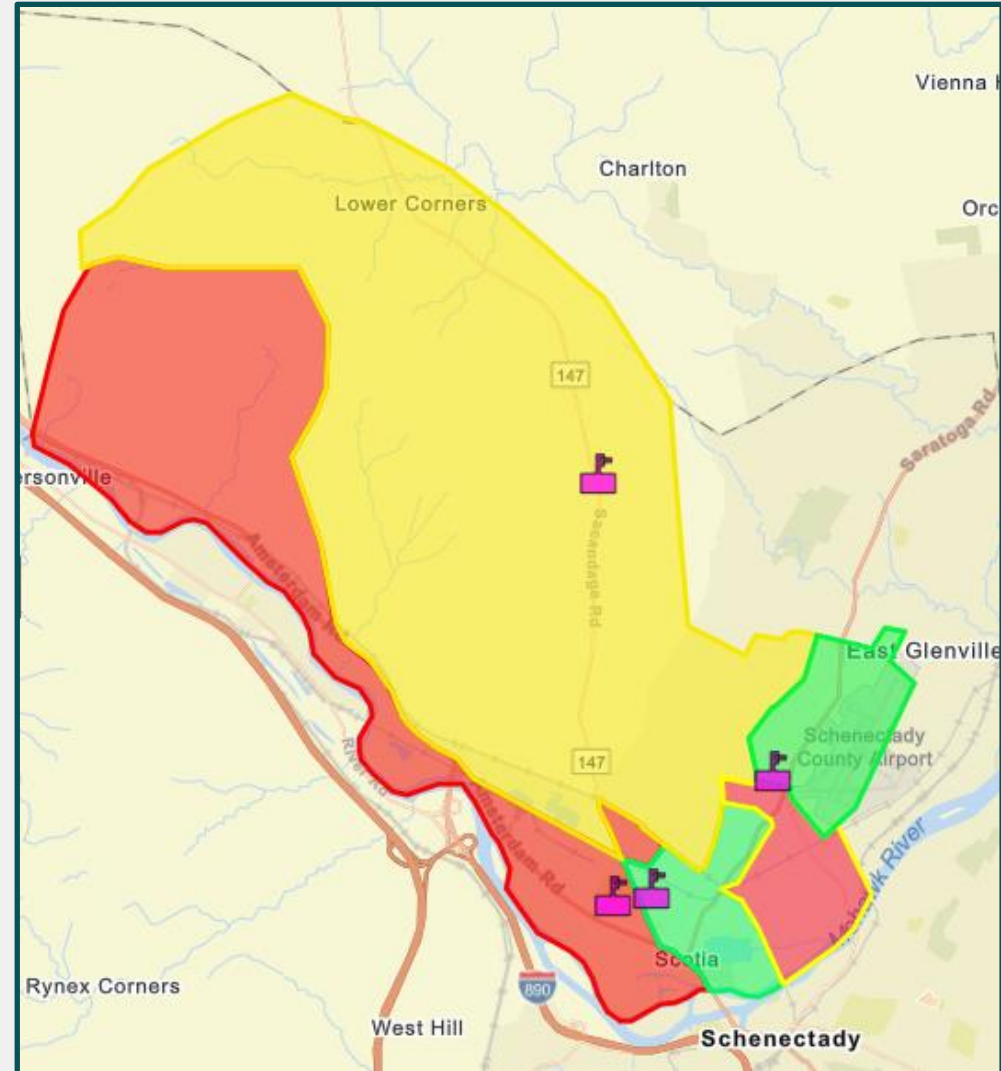
Current District Elementary School Zones



2026-27 Main Elementary Zones: 1st – 5th Grade Students

The following map depicts the 2026-27 school zones for next year's elementary students, the 1st – 5th graders within this group have been notified of their school assignments. Specifics regarding the development of these zones are as follows:

- To maintain continuity for students' current neighborhoods (bus routes), new zones had to be strategically developed around three existing bus routes; these routes contribute to the segmented non-adjacent Lincoln and Sacandaga zones
- The large yellow zone reflects the new Glendaal zone
- The two (2) small green zones reflect the new Lincoln zone
- The three (3) red zones reflect the new Sacandaga zone



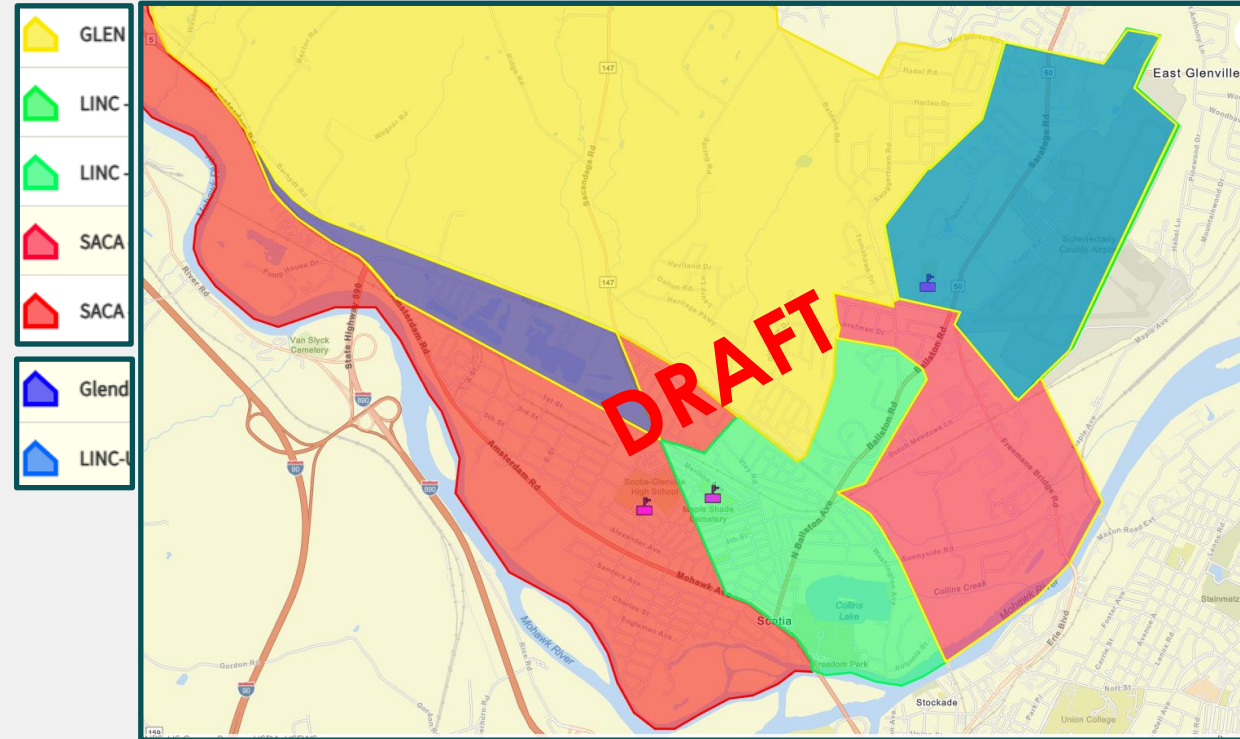
Option 1: Current & Future Flex Zones: For Incoming KG & New-To-District Students

To achieve the District's desired number of KG sections at each school and to establish zoning expectations for new-to-district students, flex/swing zones will be necessary and used in either the upcoming school year and/or future school years, when necessary. An overview of the goals, design and metrics of the proposed flex zones are as follows:

Goals: 1) Establish expected zones to reflect expectations after initial grandfathering of students is complete
2) Balance class sizes and enrollment and ensure class sections, particularly KG sections at Sacandaga, are filled

Design: The purple and blue shaded areas indicate locations along or between major thoroughfares or geographic landmarks (such as railroad tracks) and/or areas immediately adjacent to another school boundary that flex zone students may attend

transpargroup.com



Glendal Zone (Yellow): Contains a flex zone (purple); KG and new students in this area would be assigned by the District to either Glendal or Sacandaga based on class size and district needs; zone currently includes 8 students, 1 of whom is a kindergarten student

Lincoln Zone (Green): Contains a flex zone (blue); students would be assigned by the district to either Lincoln or Sacandaga; zone includes 64 students, including 9 KG students; however, due to sibling-placement requirements, only 4 of these students are eligible to attend Sacandaga

2026-27 Estimated Enrollment by Grade for Main Zones

- Chart 1 reflects District-provided guidelines for students per section, number of sections per school, and the placement of special programs
- Chart 2 summarizes **2026 - 27 Main Zone enrollment analysis**, including assigned students per grade, targeted max enrollment by grade if all sections are filled to guideline capacity, and resulting variance

Chart 1

Class Sizes Per Grade Level	Students Per Section Guidelines	# of Sections Per School	GD	LN	SAC
KG	22	K	2	2	3
1	22	1	2	2	3
2	23	2	2	2	3
3	24	3	2	2	3
4	25	4	2	2	3
5	26	5	2	2	3
		Special Programs By Type, Per School			
		DS	Yes	No	No
		15:1	No	Yes	No
		CT	No	Yes	Yes

Chart 2

Main Zone Enrollment Analysis (Not Incorporating Flex Zones)							
Number of 26-27 students assigned to each school and grade from rezoning data and targeted placements							
Schools & Grade Levels	1	2	3	4	5	KG	Grand Total
GLEN	44	48	48	43	47	47	277
LINC	48	35	44	42	56	58	283
SAC	58	68	63	53	73	42	357
Grand Total	150	151	155	138	176	147	917

Note: The table above shows enrollment of some students in self-contained classes. Self-contained numbers do not impact max numbers of students in the table below.

Targeted maximum number of students per grade level based on section guidelines and number of sections							
Schools & Grade Levels	1	2	3	4	5	KG	Grand Total
GLEN	44	46	48	50	52	44	284
LINC	44	46	48	50	52	44	284
SAC	66	69	72	75	78	66	426
Grand Total	154	161	168	175	182	154	994

Option 1: Current & Future Flex Zones – Enrollment Data by Grade for Each Flex Zone

The Option 1 Flex Zones are strategic and adhere to the District's primary goal but are challenged in meeting the secondary goal of balancing class sizes and specifically meeting Sacandaga's KG section needs, even combined

Purple Flex Zone KG Student (1) from Glendaal to Sacandaga							
Number of 26-27 students assigned to each school and grade from rezoning data and targeted placements							
Schools & Grade Levels	1	2	3	4	5	KG	Grand Total
GLEN	44	48	48	43	47	46	276
LINC	48	35	44	42	56	58	283
SAC	58	68	63	53	73	43	358
Grand Total	150	151	155	138	176	147	917

Blue Flex Zone KG Students (4) from Lincoln to Sacandaga							
Number of 26-27 students assigned to each school and grade from rezoning data and targeted placements							
Schools & Grade Levels	1	2	3	4	5	KG	Grand Total
GLEN	44	48	48	43	47	47	277
LINC	48	35	44	42	56	54	279
SAC	58	68	63	53	73	46	361
Grand Total	150	151	155	138	176	147	917

Targeted maximum number of students per grade level			
Schools & Grade Levels	1	2	3
GLEN	44	46	48
LINC	44	46	48
SAC	66	69	72
Grand Total	154	161	168

Option 1 Blue & Purple Flex Zones Combined: KG Students (5) from Glendaal and Lincoln to Sacandaga							
Number of 26-27 students assigned to each school and grade from rezoning data and targeted placements							
Schools & Grade Levels	1	2	3	4	5	KG	Grand Total
GLEN	44	48	48	43	47	46	276
LINC	48	35	44	42	56	54	279
SAC	58	68	63	53	73	47	362
Grand Total	150	151	155	138	176	147	917

based on section guidelines and number of sections				
	4	5	KG	Grand Total
	50	52	44	284
	50	52	44	284
	75	78	66	426
	175	182	154	994

Variance between targeted maximum number of students			
Schools & Grade Levels	1	2	3
GLEN	0	-2	0
LINC	-4	11	4
SAC	8	1	9
Grand Total	4	10	13

Targeted maximum number of students per grade level based on section guidelines and number of sections							
Schools & Grade Levels	1	2	3	4	5	KG	Grand Total
GLEN	44	46	48	50	52	44	284
LINC	44	46	48	50	52	44	284
SAC	66	69	72	75	78	66	426
Grand Total	154	161	168	175	182	154	994

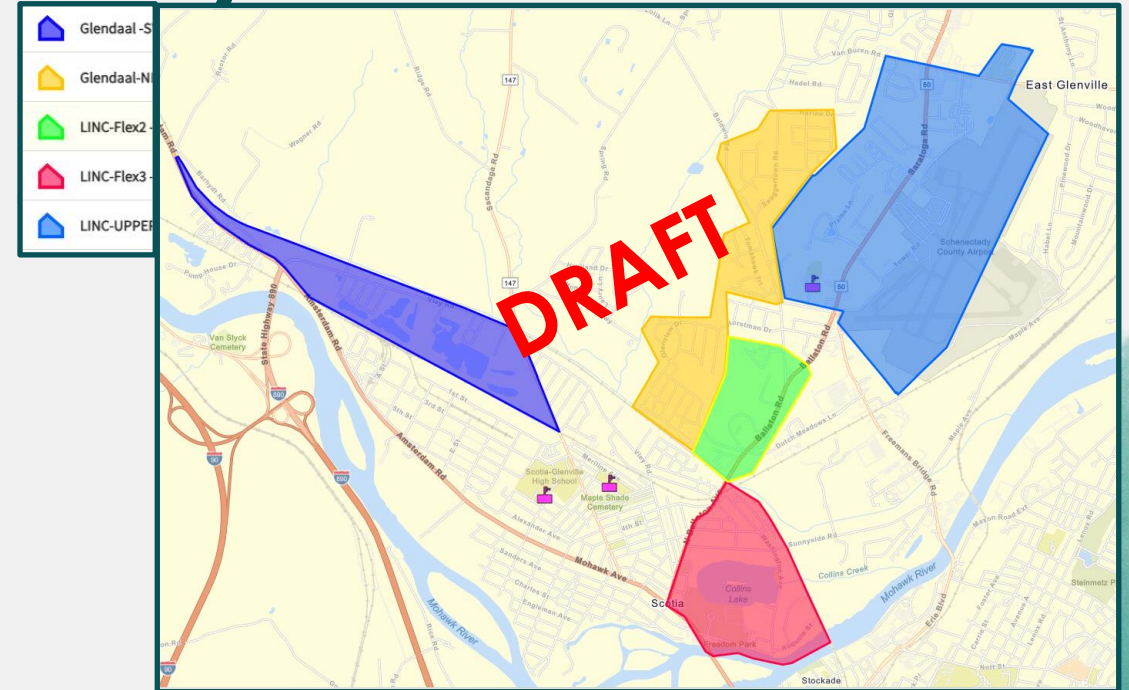
per section as compared to 26-27 student assignments				
	4	5	KG	Grand Total
	7	5	-3	7
	8	-4	-10	5
	22	5	20	65
	37	6	7	77

Variance between targeted maximum number of students per section as compared to 26-27 student assignments							
Schools & Grade Levels	1	2	3	4	5	KG	Grand Total
GLEN	0	-2	0	7	5	-2	8
LINC	-4	11	4	8	-4	-10	5
SAC	8	1	9	22	5	19	64
Grand Total	4	10	13	37	6	7	77

Operational Flexibility Options to Address Isolated Capacity Variances

The District may consider the following options, as circumstances warrant, to thoughtfully manage instances where individual grade levels exceed targeted capacity guidelines while minimizing disruption to students, families, and staff:

- Targeted Use of Flex Zones for New Students:** Utilize flex zone data to assign select incoming kindergarten or new-to-district students to the alternate school within the flex/swing zone when specific grades exceed capacity
- Consider Additional Flex Zone Options:** Because the District cannot reliably predict the number of incoming KG or new-to-district students residing in Option 1 flex zones each year, enrollment in those zones may not always meet grade-level reassignment needs; in such cases, the District may need to operate flex zones in conjunction or phase in Option 2 flex zones to supplement Option 1, as necessary



This map isolates the Option 1 flex zones and adds three (3) Option 2 areas for consideration; it identifies total student counts by flex zone, with Option 1 zones still shown in blue and purple, and Option 2 zones shown in gold (from Glendaal zone), red (from Lincoln zone), and green (from Lincoln zone); the District received a grade-level student spreadsheet listing all students in each flex zone for planning purposes; flex zone data must be updated annually to support future capacity adjustments

Option 2: Supplemental Future Flex Zones – Enrollment Data by Grade for Each Flex Zone

Option 2 Flex Zones supplement Option 1 and support the District’s primary goal but are limited, like Option 1, individually and collectively, in balancing class sizes and fully meeting Sacandaga’s kindergarten needs. When combined, Option 1 & 2 zones together achieve the desired kindergarten sections for next year, but critically, routing impacts remain to be determined and will need ample and dedicated time to be analyzed by the Transportation Department

Gold Flex Zone KG Students (4) from Glendaal to Sacandaga								Green Flex Zone KG Students (2) from Lincoln to Sacandaga								Red Flex Zone KG Students (8) from Lincoln to Sacandaga							
Number of 26-27 students assigned to each school and grade from rezoning data and targeted placements								Number of 26-27 students assigned to each school and grade from rezoning data and targeted placements								Number of 26-27 students assigned to each school and grade from rezoning data and targeted placements							
Schools & Grade Levels	1	2	3	4	5	KG	Grand Total	Schools & Grade Levels	1	2	3	4	5	KG	Grand Total	Schools & Grade Levels	1	2	3	4	5	KG	Grand Total
GLEN	44	48	48	43	47	43	273	GLEN	44	48	48	43	47	47	277	GLEN	44	48	48	43	47	47	277
LINC	48	35	44	42	56	58	283	LINC	48	35	44	42	56	56	281	LINC	48	35	44	42	56	50	275
SAC	58	68	63	53	73	46	361	SAC	58	68	63	53	73	44	359	SAC	58	68	63	53	73	50	365
Grand Total	150	151	155	138	176	147	917	Grand Total	150	151	155	138	176	147	917	Grand Total	150	151	155	138	176	147	917

Option 2 Gold, Green, & Red Flex Zones Combined: KG Students (14) from Glendaal and Lincoln to Sacandaga								Options 1 & 2 Purple, Blue, Gold, Green, & Red Flex Zones Combined: KG Students (19) from Glendaal and Lincoln to Sacandaga							
Number of 26-27 students assigned to each school and grade from rezoning data and targeted placements								Number of 26-27 students assigned to each school and grade from rezoning data and targeted placements							
Schools & Grade Levels	1	2	3	4	5	KG	Grand Total	Schools & Grade Levels	1	2	3	4	5	KG	Grand Total
GLEN	44	48	48	43	47	43	273	GLEN	44	48	48	43	47	42	272
LINC	48	35	44	42	56	48	273	LINC	48	35	44	42	56	44	269
SAC	58	68	63	53	73	56	371	SAC	58	68	63	53	73	61	376
Grand Total	150	151	155	138	176	147	917	Grand Total	150	151	155	138	176	147	917

Targeted maximum number of students per grade level based on section guidelines and number of sections								Targeted maximum number of students per grade level based on section guidelines and number of sections							
Schools & Grade Levels	1	2	3	4	5	KG	Grand Total	Schools & Grade Levels	1	2	3	4	5	KG	Grand Total
GLEN	44	46	48	50	52	44	284	GLEN	44	46	48	50	52	44	284
LINC	44	46	48	50	52	44	284	LINC	44	46	48	50	52	44	284
SAC	66	69	72	75	78	66	426	SAC	66	69	72	75	78	66	426
Grand Total	154	161	168	175	182	154	994	Grand Total	154	161	168	175	182	154	994

Variance between targeted maximum number of student per section as compared to 26-27 student assignments								Variance between targeted maximum number of student per section as compared to 26-27 student assignments							
Schools & Grade Levels	1	2	3	4	5	KG	Grand Total	Schools & Grade Levels	1	2	3	4	5	KG	Grand Total
GLEN	0	-2	0	7	5	1	11	GLEN	0	-2	0	7	5	2	12
LINC	-4	11	4	8	-4	-4	11	LINC	-4	11	4	8	-4	0	15
SAC	8	1	9	22	5	10	55	SAC	8	1	9	22	5	5	50
Grand Total	4	10	13	37	6	7	77	Grand Total	4	10	13	37	6	7	77

Conclusion and Next Steps

- Following District review and approval of the proposed Flex Zones, several coordinated implementation steps will be required to ensure a smooth transition and accurate communication with families ahead of the 2026–27 school year. These steps are intended to promote clarity, operational readiness, and consistency across enrollment and transportation processes:
- Evaluate and Select Flex Options:** While questions may arise about other potential areas, the recommended flex zones reflect the District's primary and secondary goals, operational feasibility, and minimized (to the extent possible) student impact; given that student yield cannot be reliably predicted year to year for any flex zone, these options provide the most appropriate set for consideration and selection
- Family Communication for Incoming Kindergarten Students:** The District should proactively notify parents and guardians of all incoming kindergarten students regarding their assigned school zones, including clear explanation of any applicable flex zone considerations
- Updates to Public Information and Enrollment Materials:** The District should update the website, enrollment documents, and any related guidance materials to reflect the approved school zones for new-to-district students; this step is critical to preventing misinformation and ensuring that families relocating to the District receive accurate and consistent information
- Transportation Planning and Route Development:** Upon confirmation of approved zones, the Transportation Department should proceed with the development and finalization of school bus routes for the 2026–27 school year, incorporating the updated attendance boundaries
- Advance Publication of Transportation Information:** Finalized bus routes should be communicated to families well in advance of the start of the school year to support family planning, reduce uncertainty, and allow sufficient time for addressing any questions or adjustments; make secondary contact with parents of all incoming KG students to ensure awareness of assigned school zones



Thank you for your
time today